

# ■ 金門

太武山下金門最翠綠的平原丘陵地上，我們找到了理想中居住的環境，背倚金門太武山遠望福建鴻漸山，遠離塵囂遺世獨立。







壅塞的都市



無人的海邊



金東高粱田



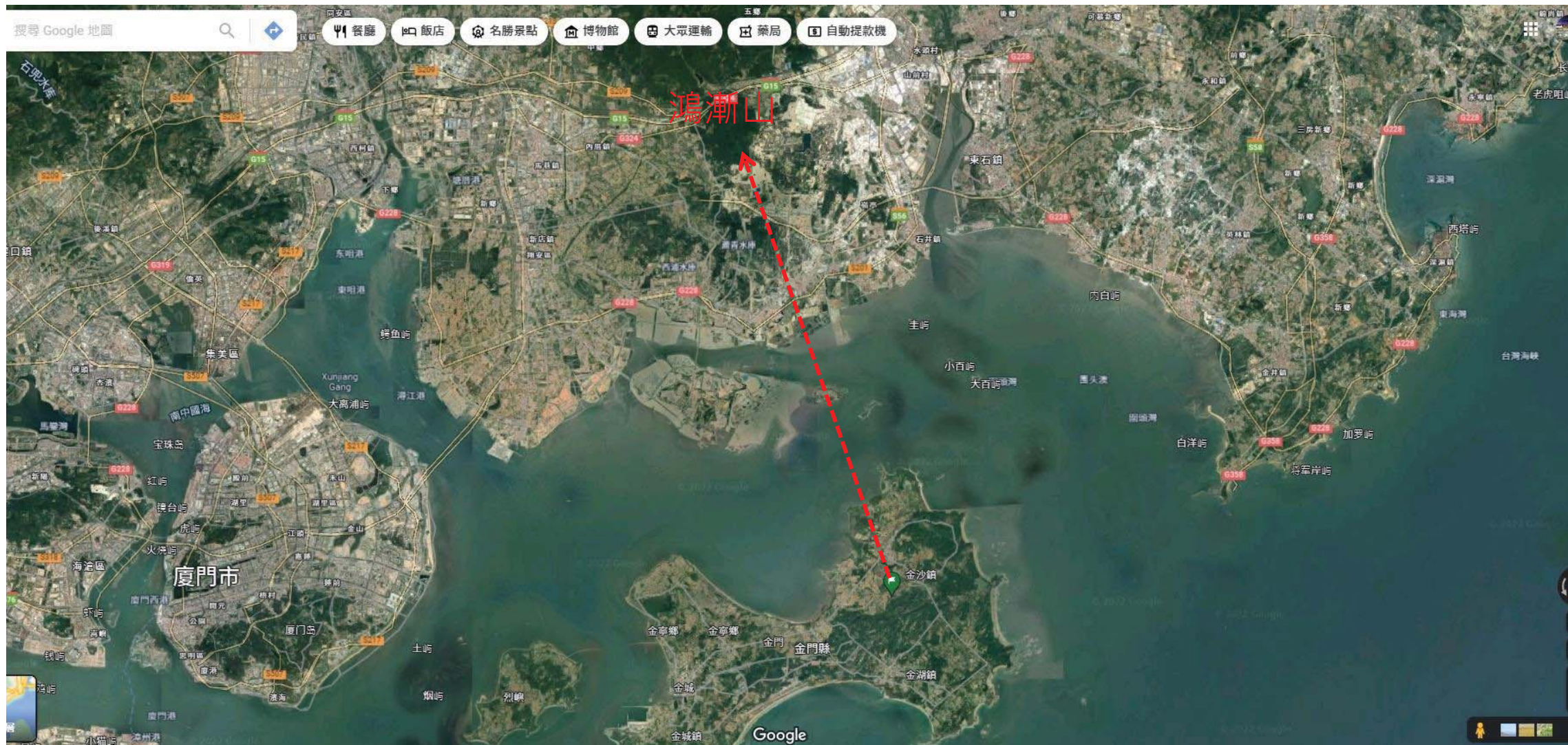
落日餘暉



# THE BRICKS 自地自建，建築師也是營造廠

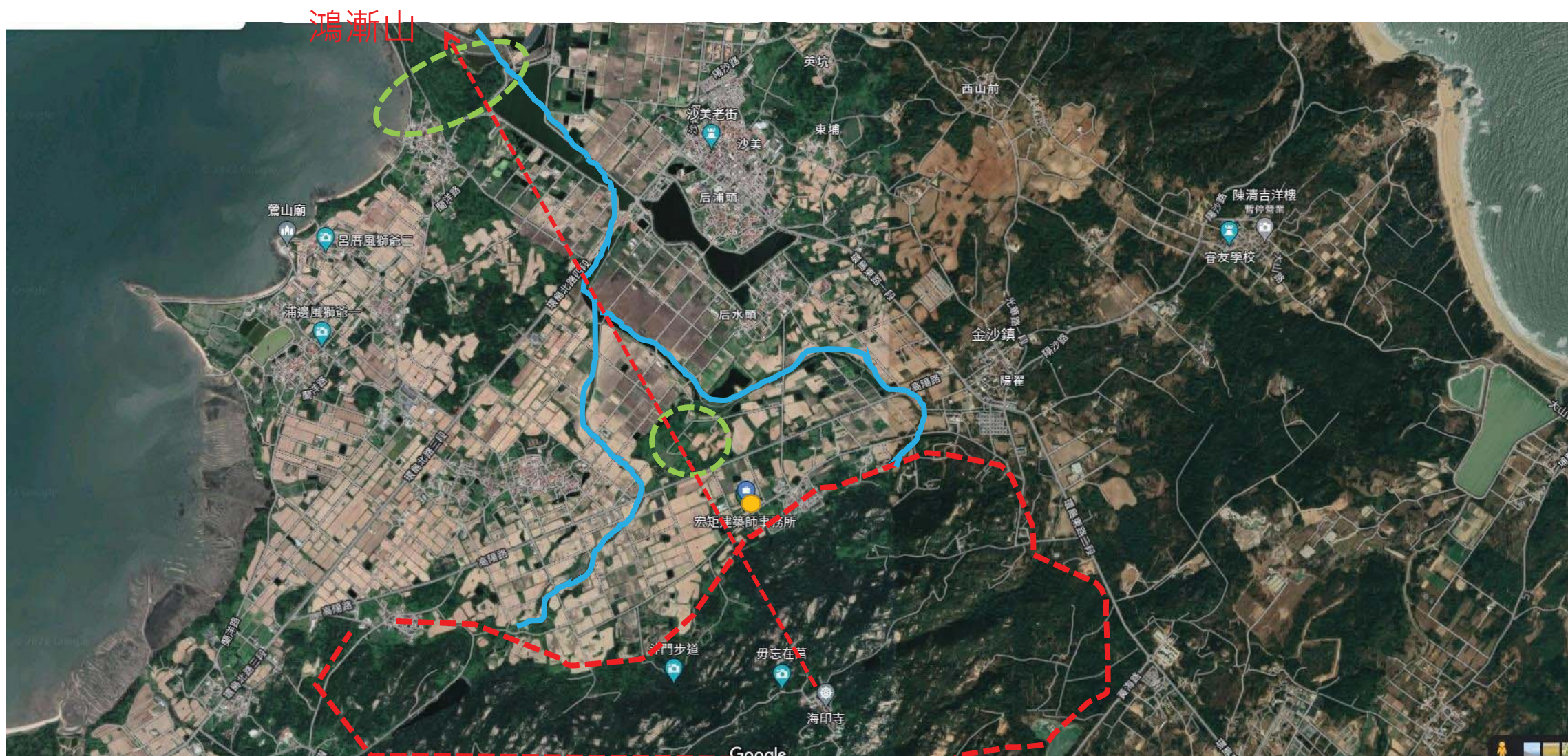






## 金門民間十大傳奇故事 鴻鳥渡江

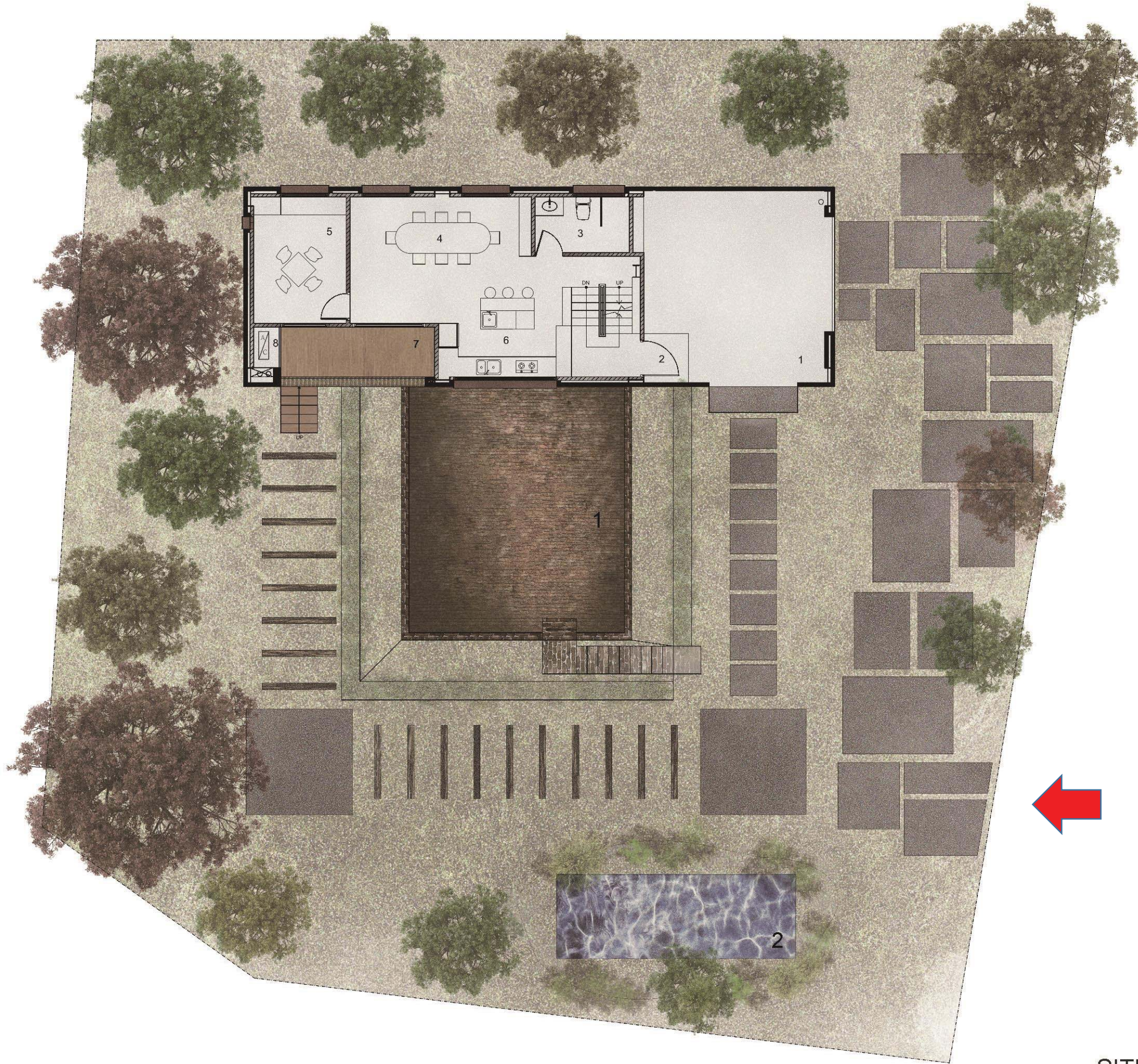
金門自古即屬同安，連島上最高的「太武山」也同屬同安的「鴻漸山」一脈。海拔五百多公尺的鴻漸山是同安東半部和金門共同的「龍脈」。整個龍脈的形制走勢攸關金門、同安兩地的運數。





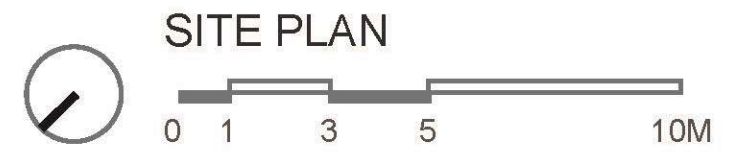




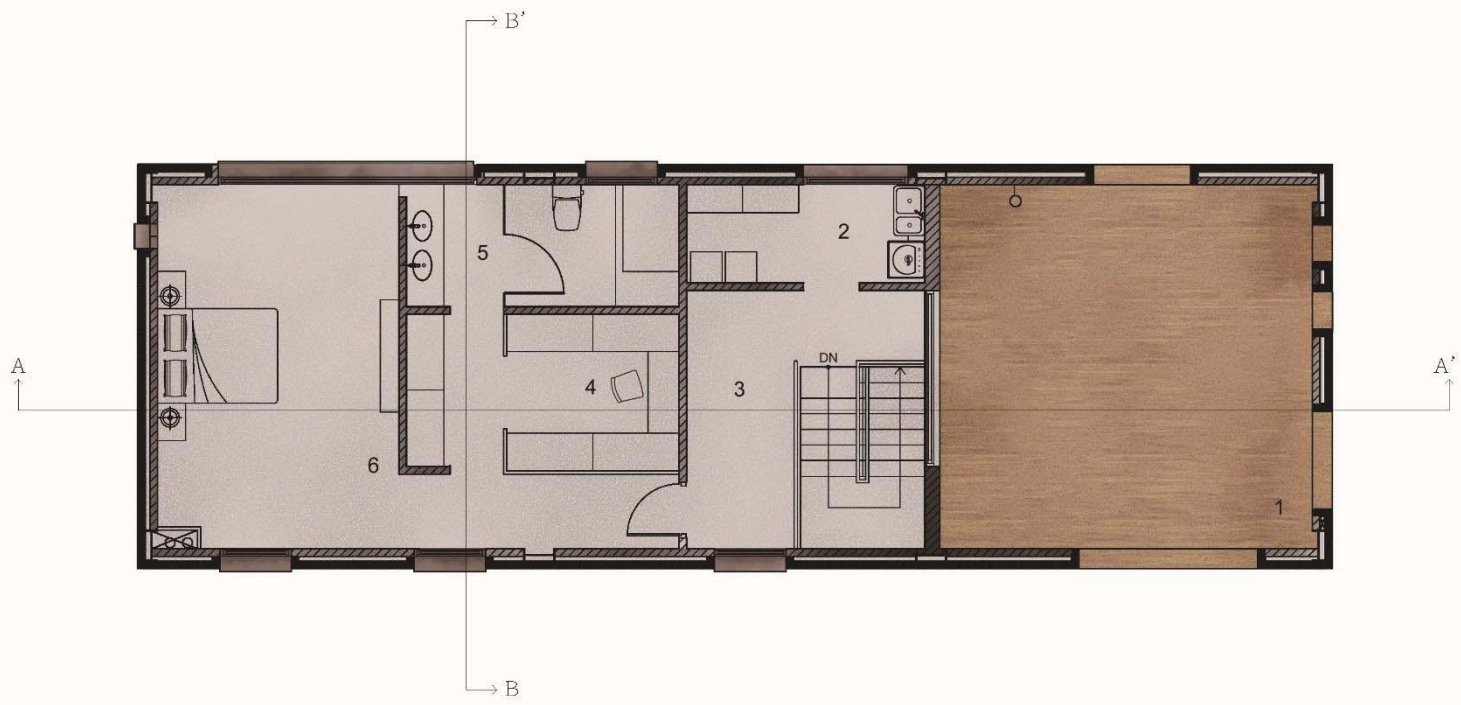


1 SUKEN PLAZA

2 ECO POND

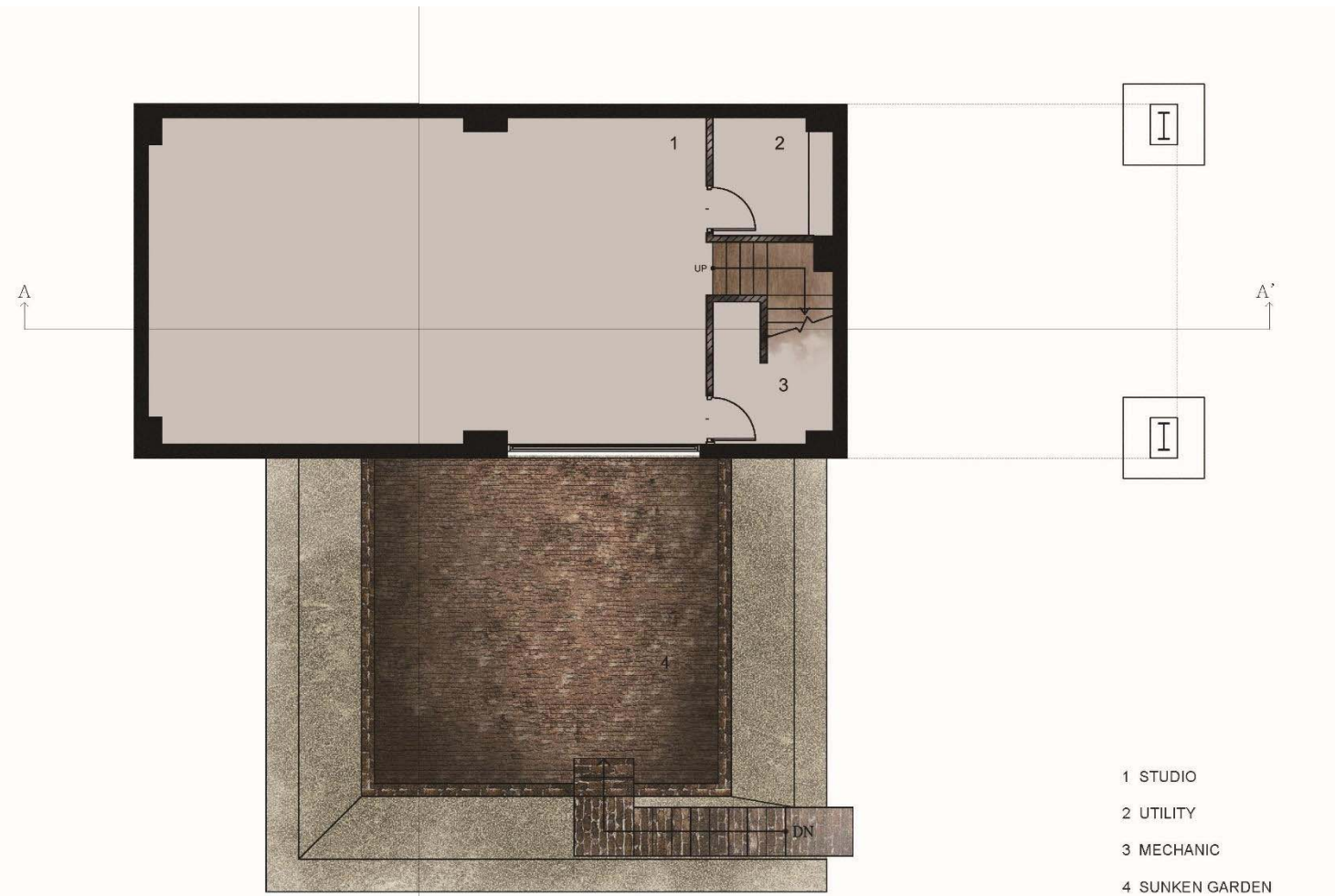




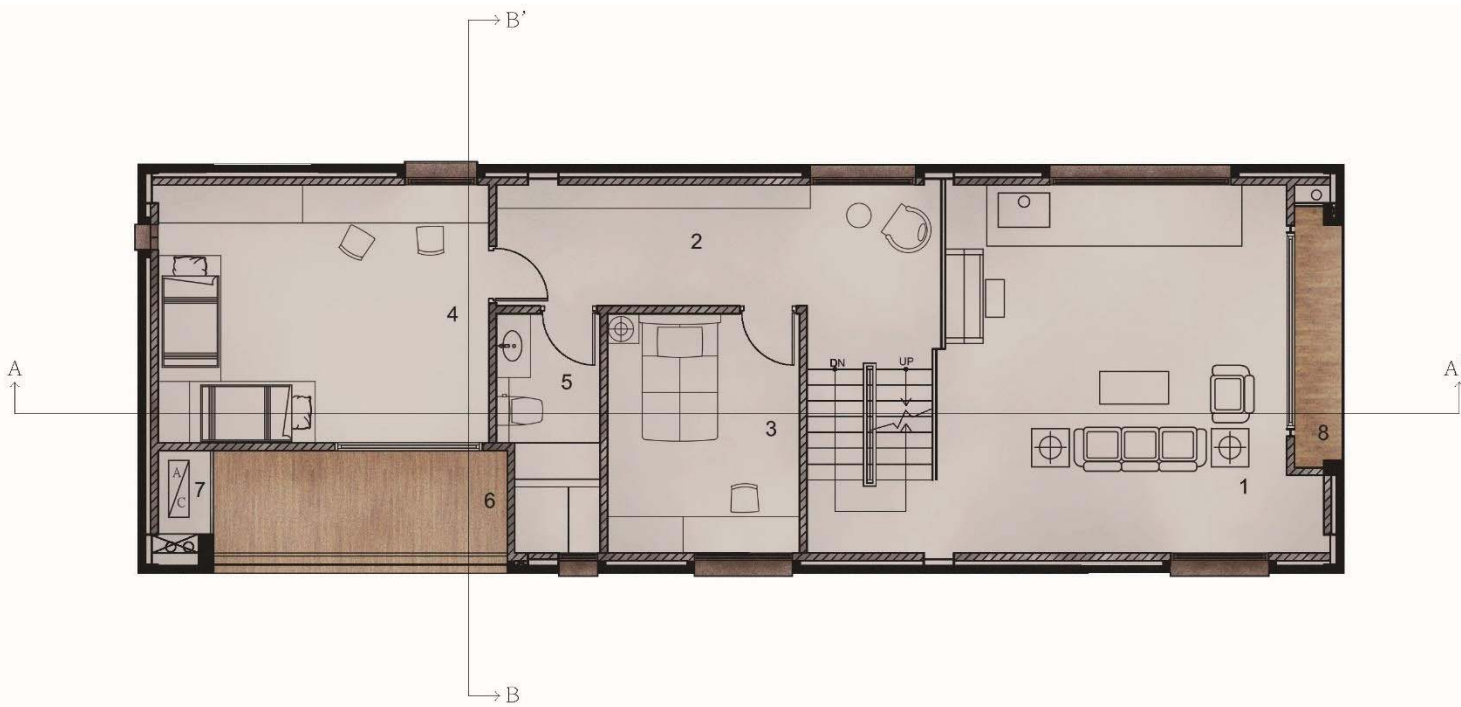


- 1 ROOF TERRACE
- 2 LAUNDRY
- 3 GALLERY
- 4 WALKING CLOSET
- 5 BATH ROOM
- 6 MASTER BEDROOM
- 7 MECHANICAL CONDUIT

THIRD FLOOR PLAN

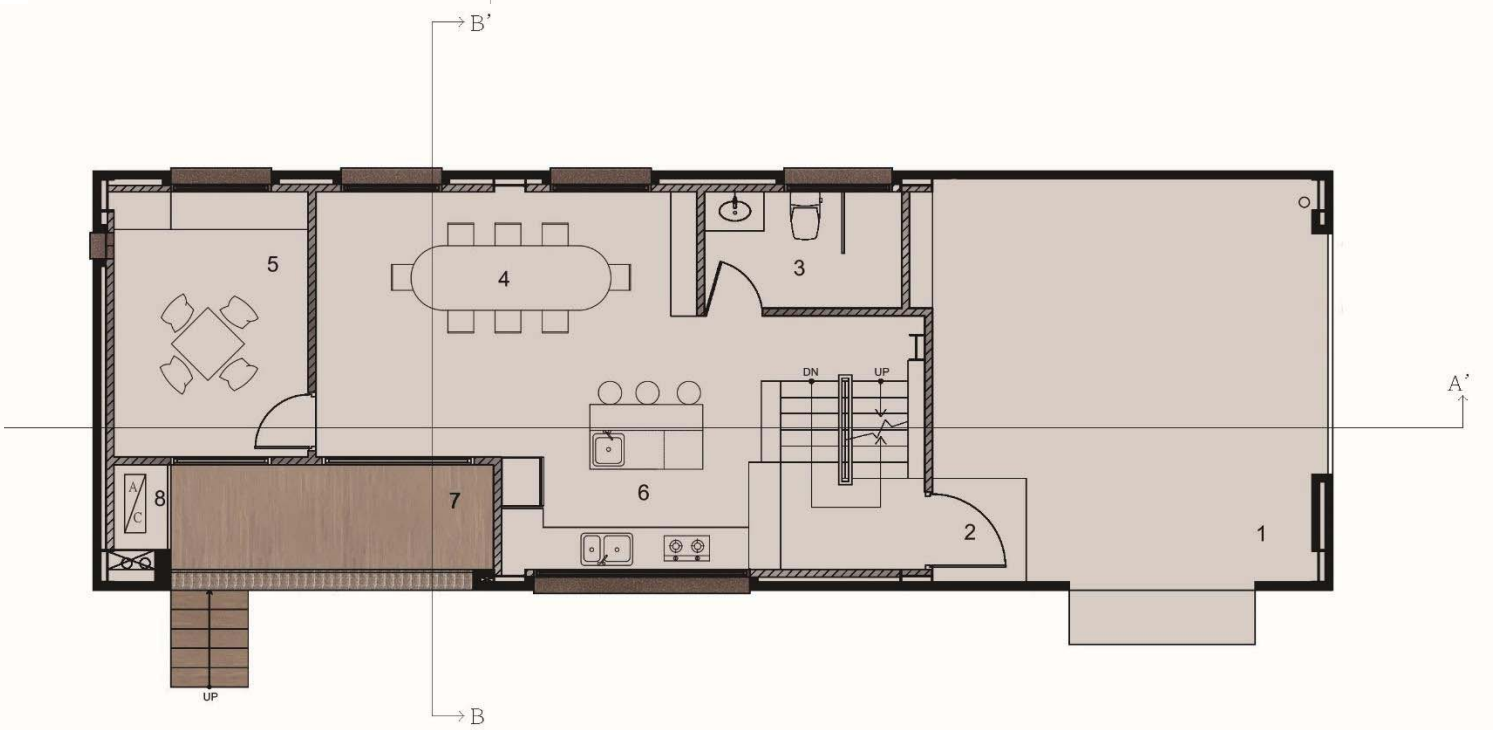


- 1 STUDIO
- 2 UTILITY
- 3 MECHANIC
- 4 SUNKEN GARDEN



- 1 LIVING AREA
- 2 LIBRARY
- 3 GUEST ROOM
- 4 KIDS ROOM
- 5 BATH ROOM
- 6 TERRACE
- 7 MECHANICAL CONDUIT
- 8 MECHANICAL CONDUIT

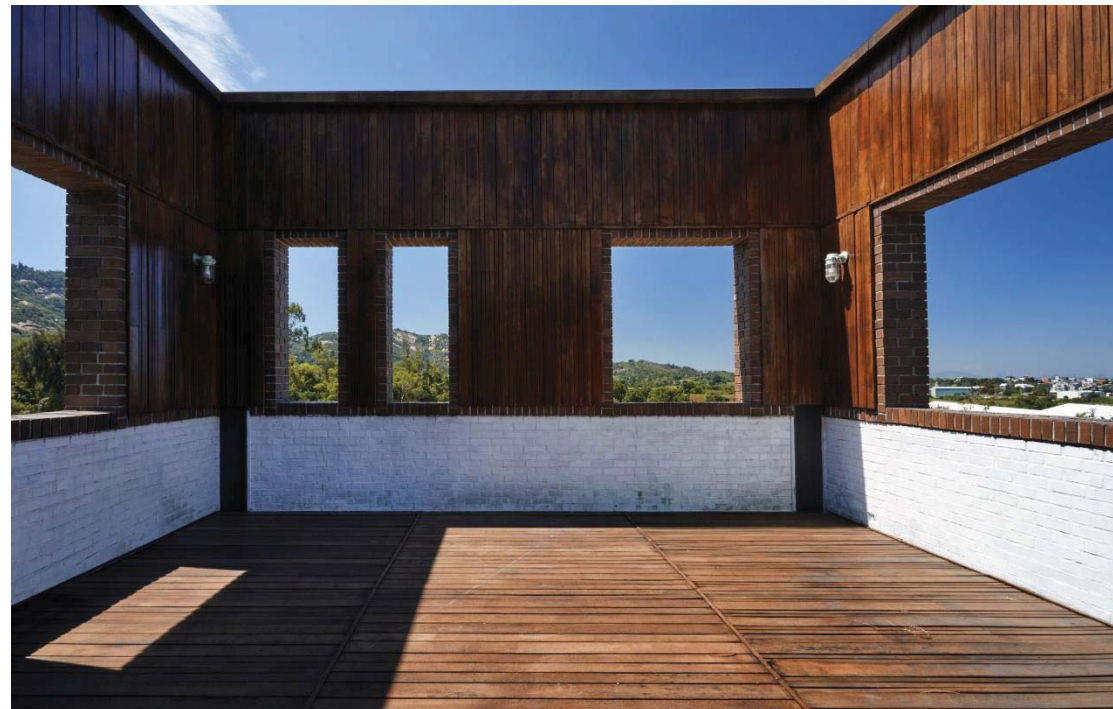
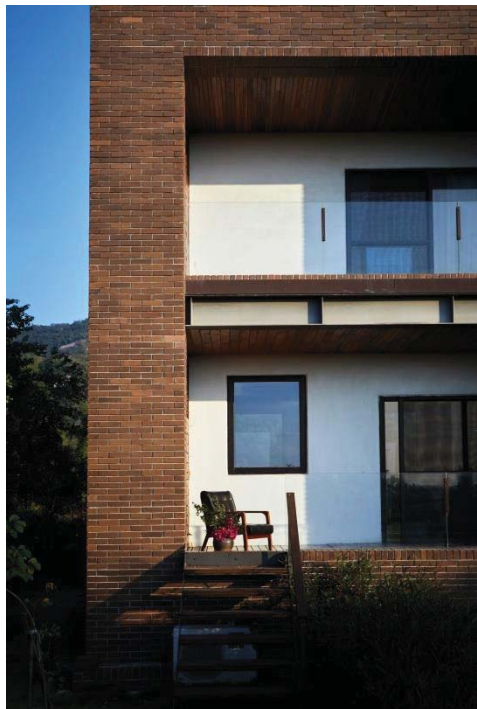
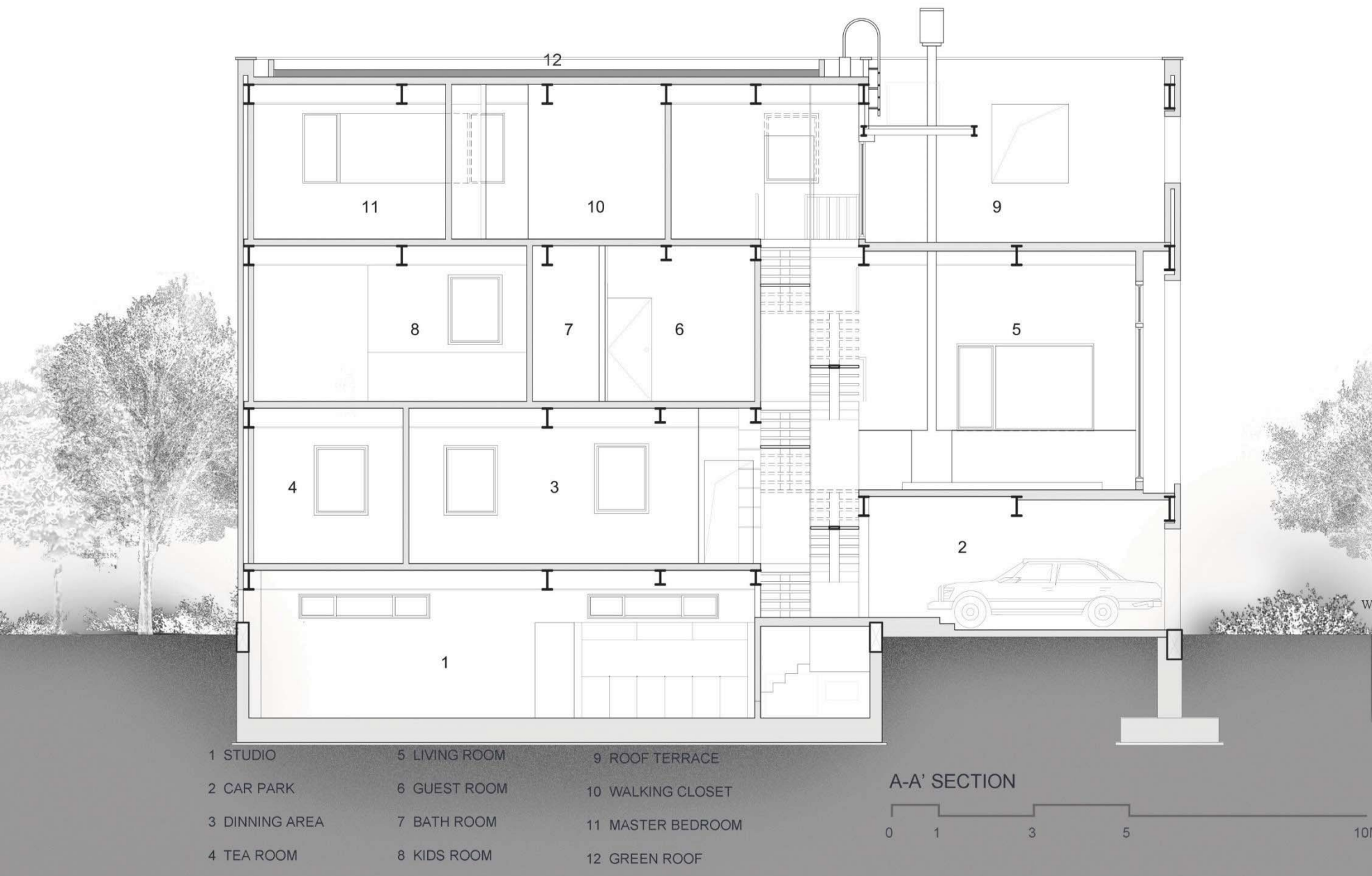
SECOND FLOOR PLAN



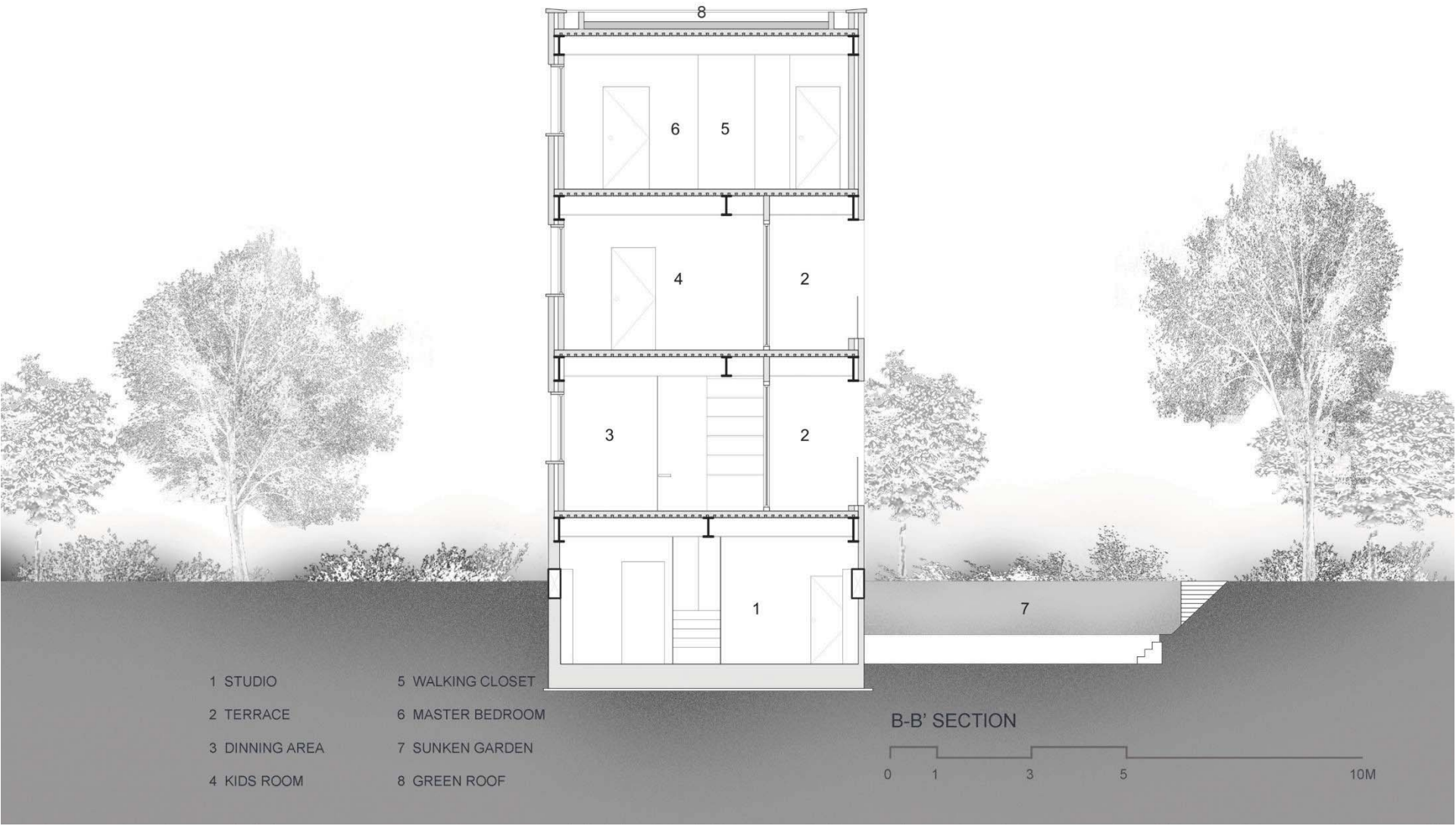
- 1 GARAGE
- 2 ENTRY
- 3 BATH ROOM
- 4 DINNING AREA
- 5 TEA ROOM
- 6 KITCHEN
- 7 TERRACE
- 8 MECHANICAL CONDUIT

FIRST FLOOR PLAN

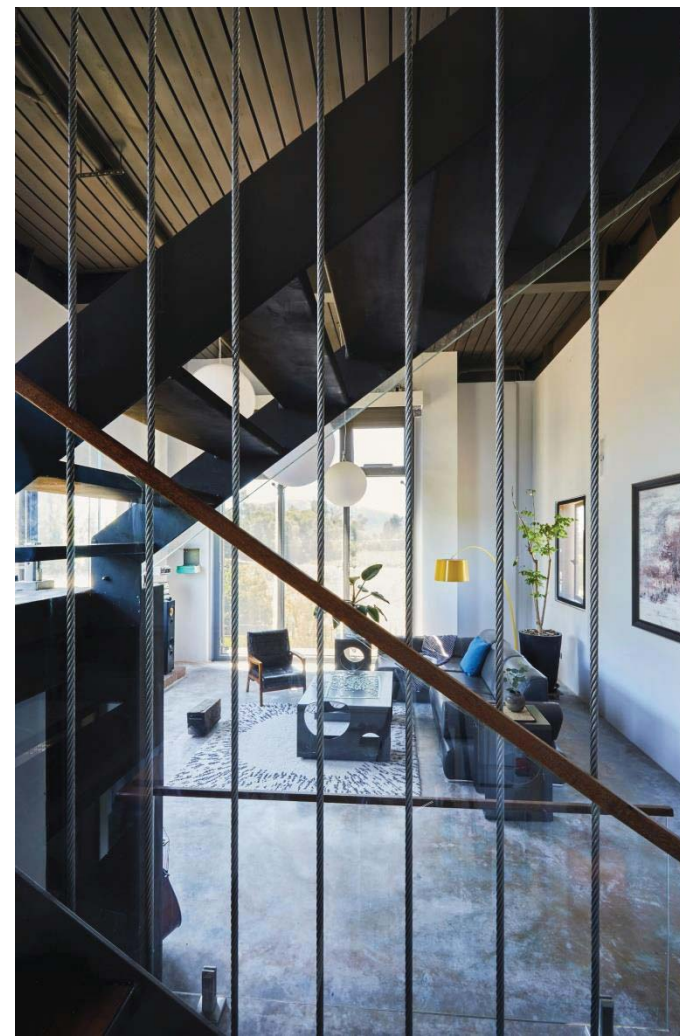
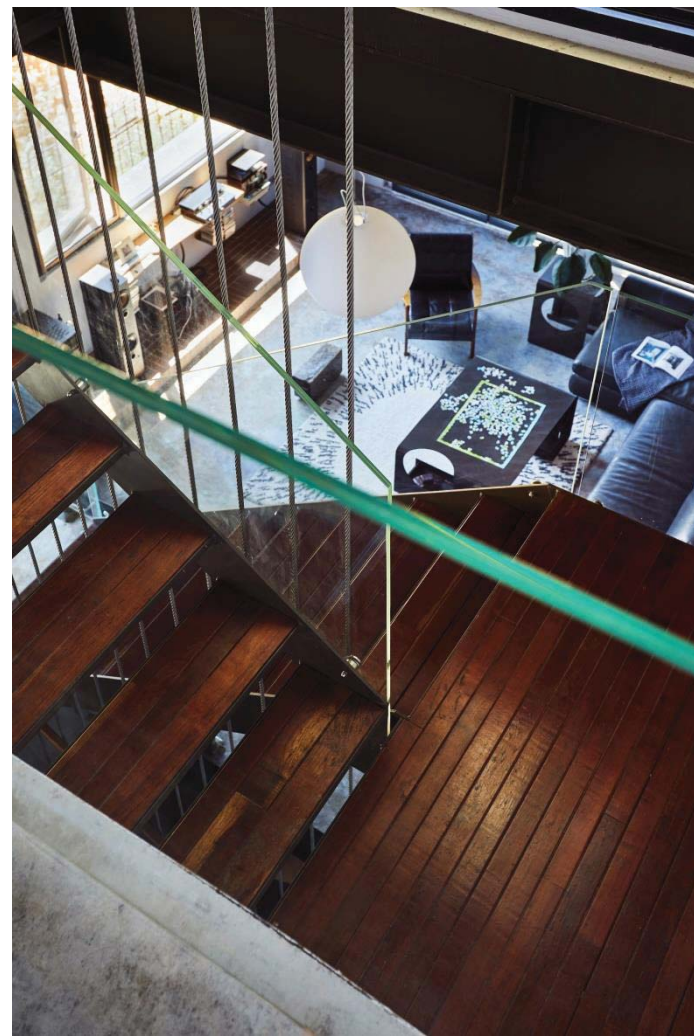




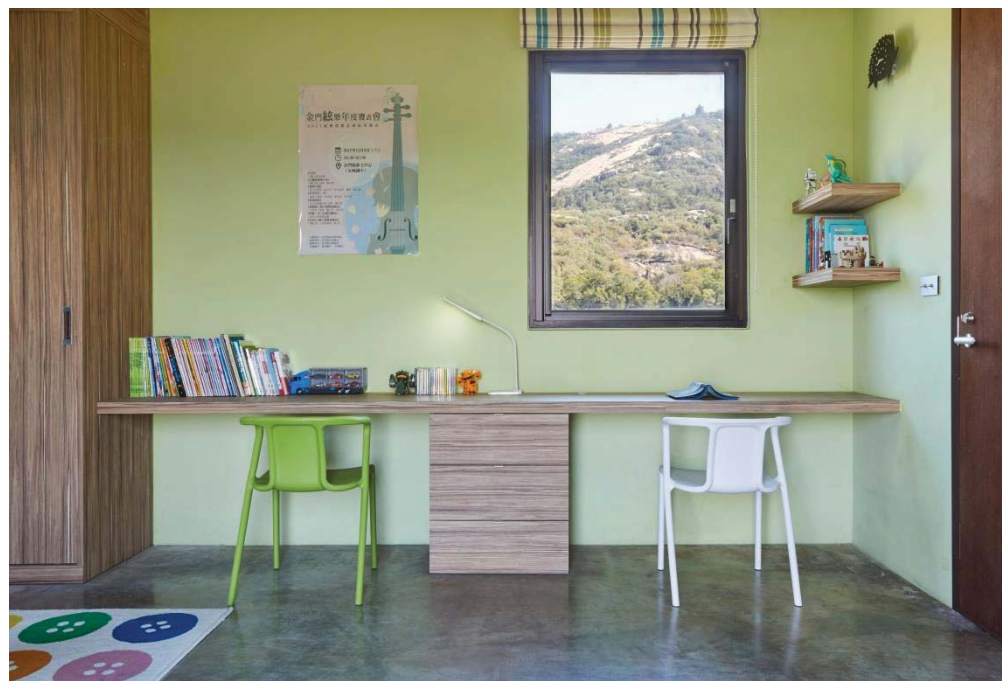








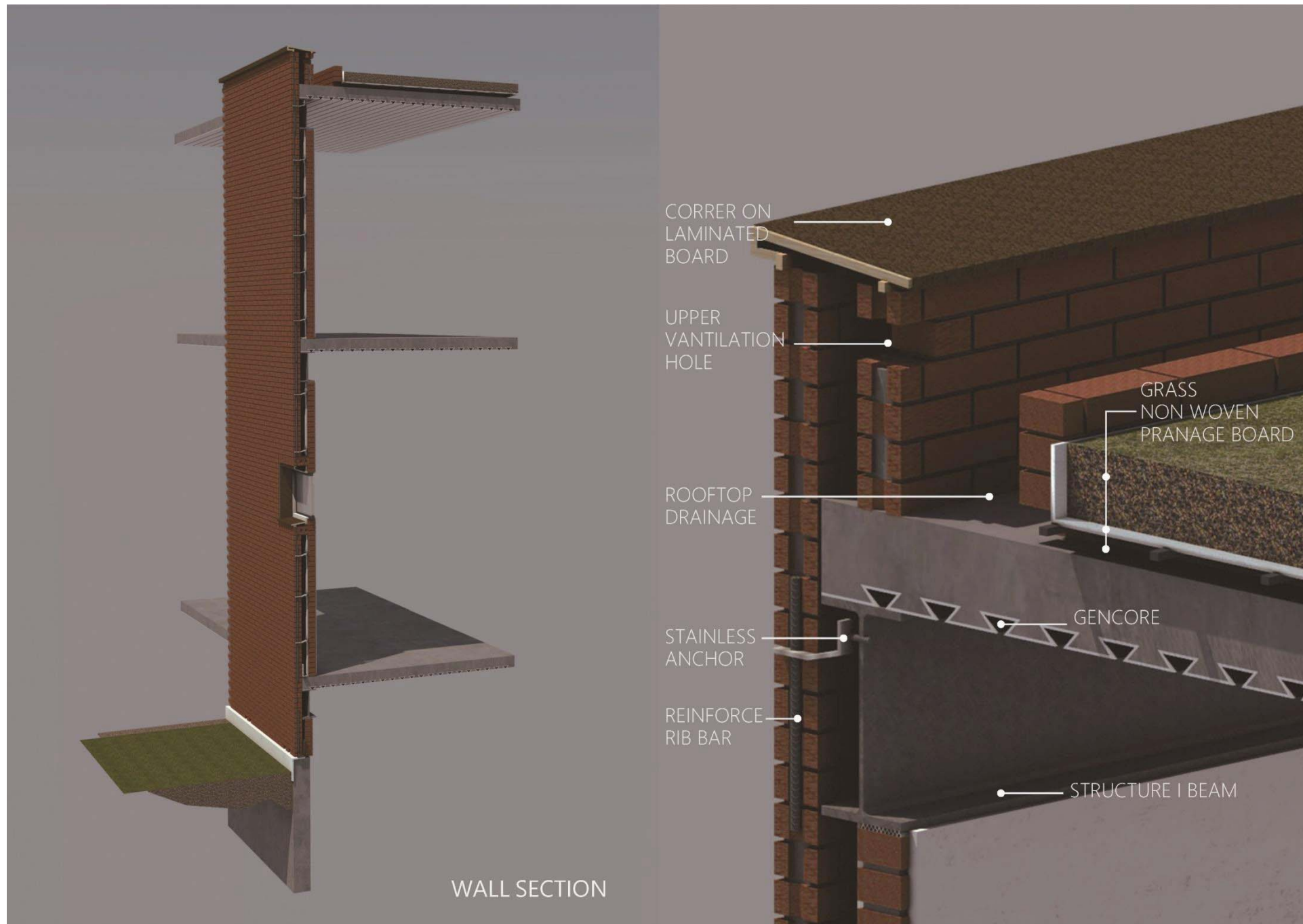




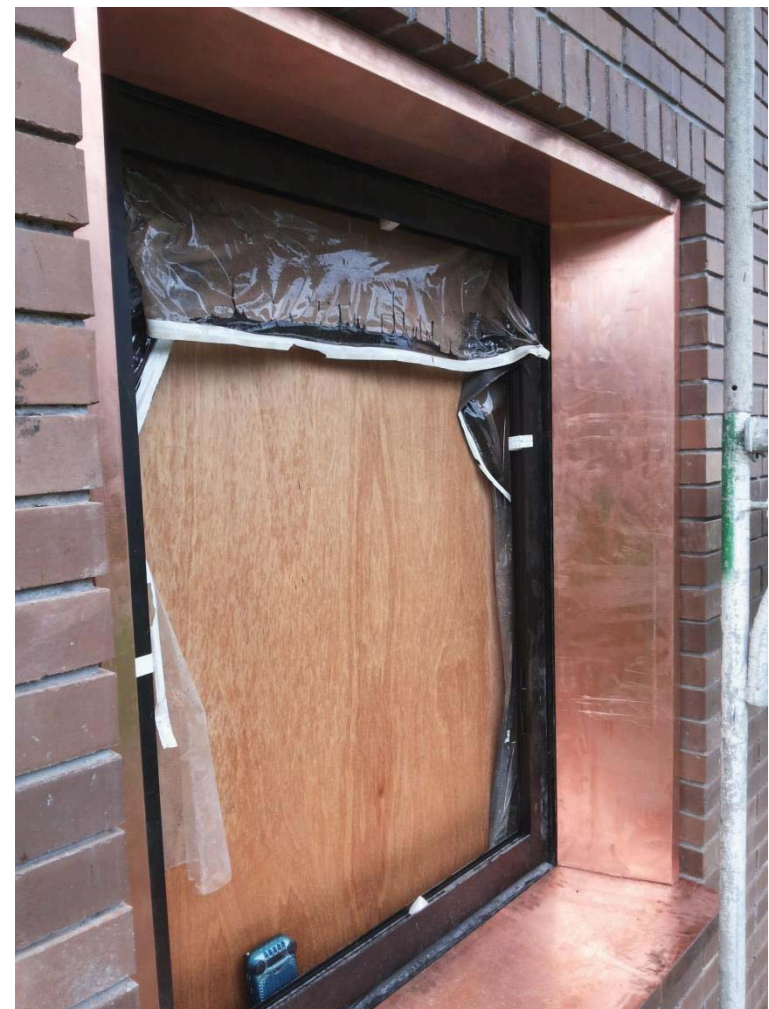
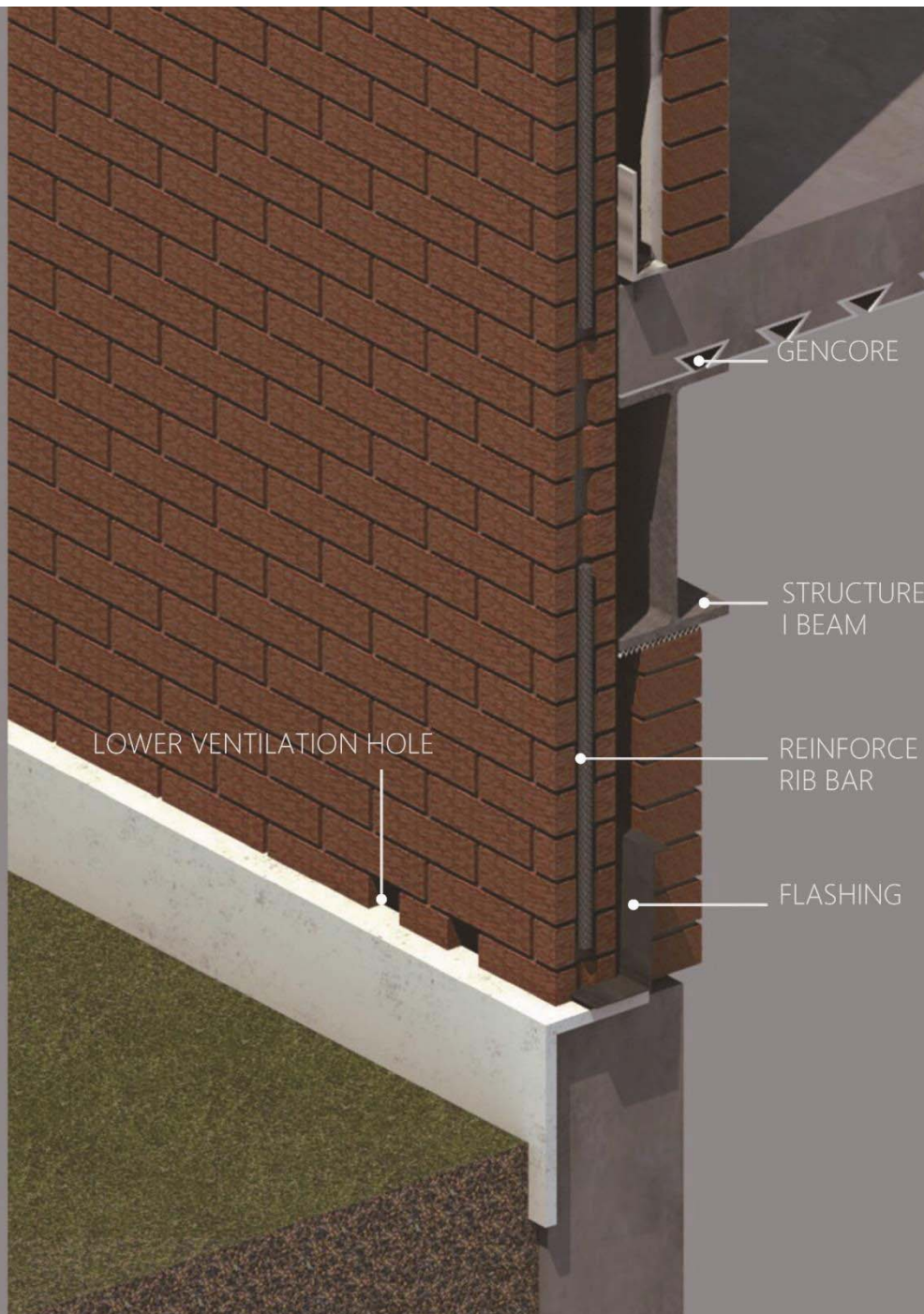
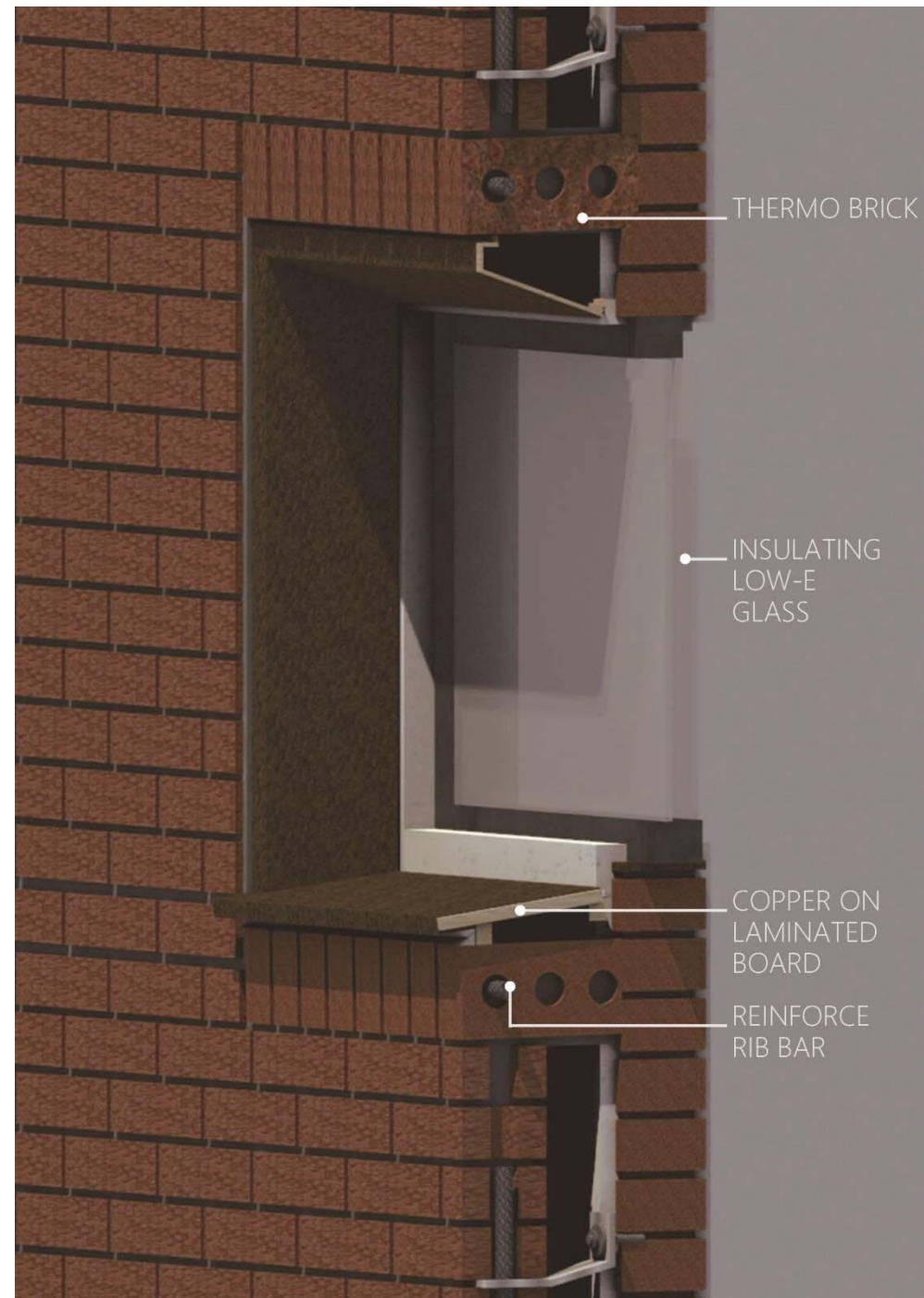












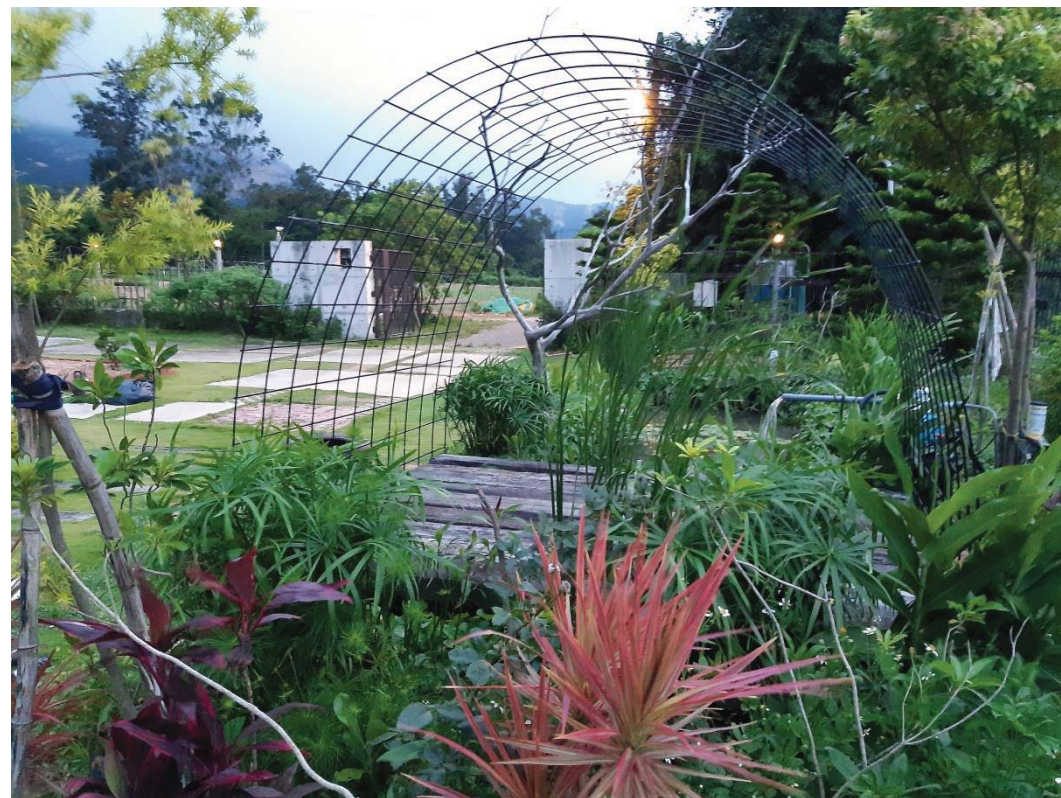










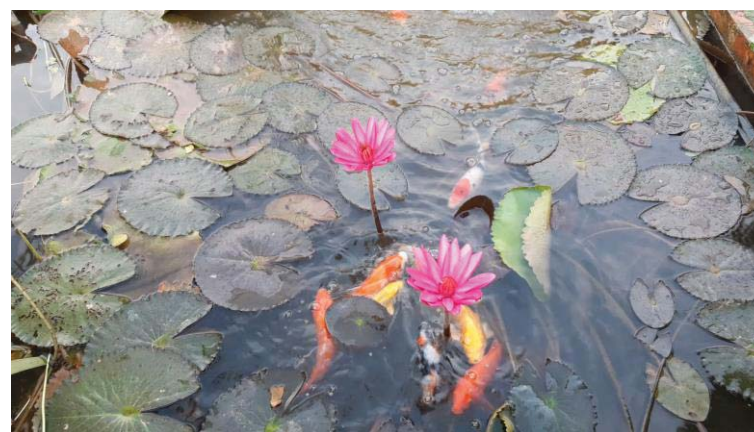




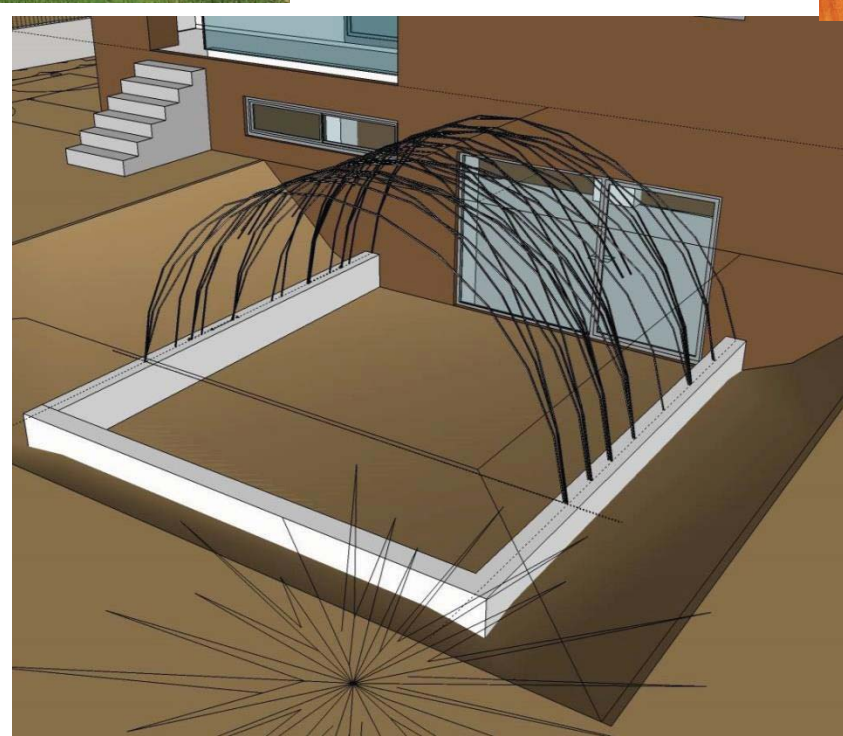
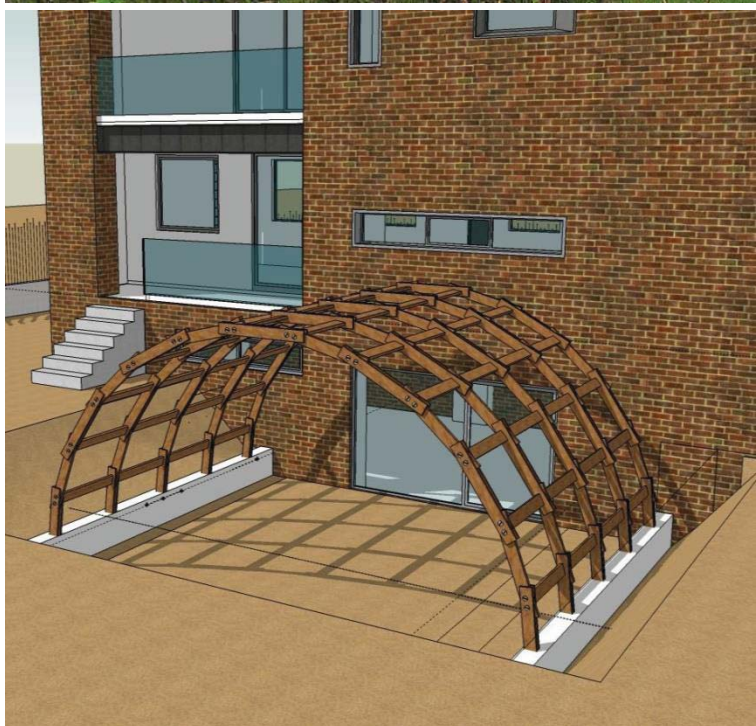
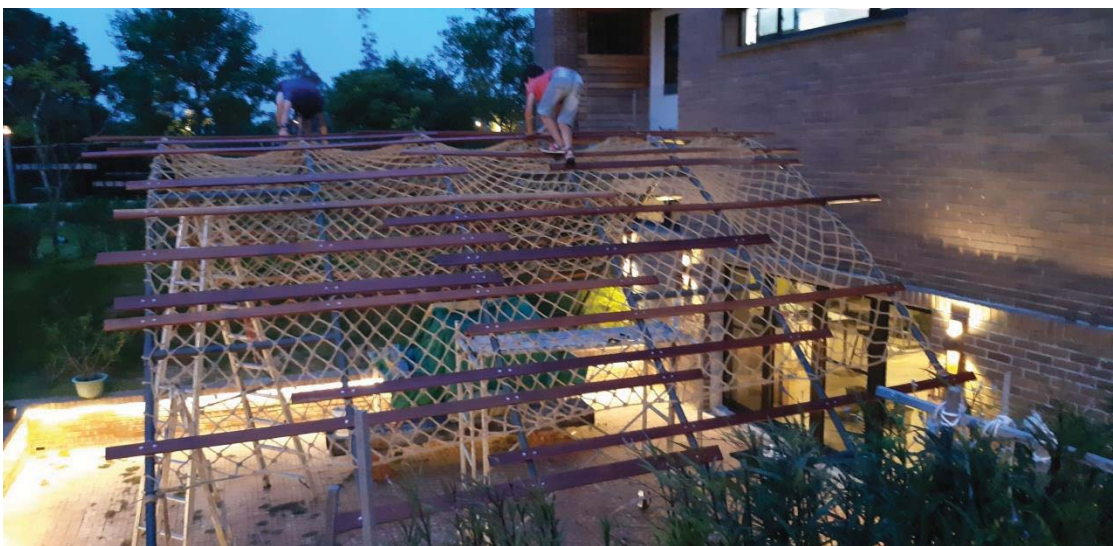
生態景觀泳池



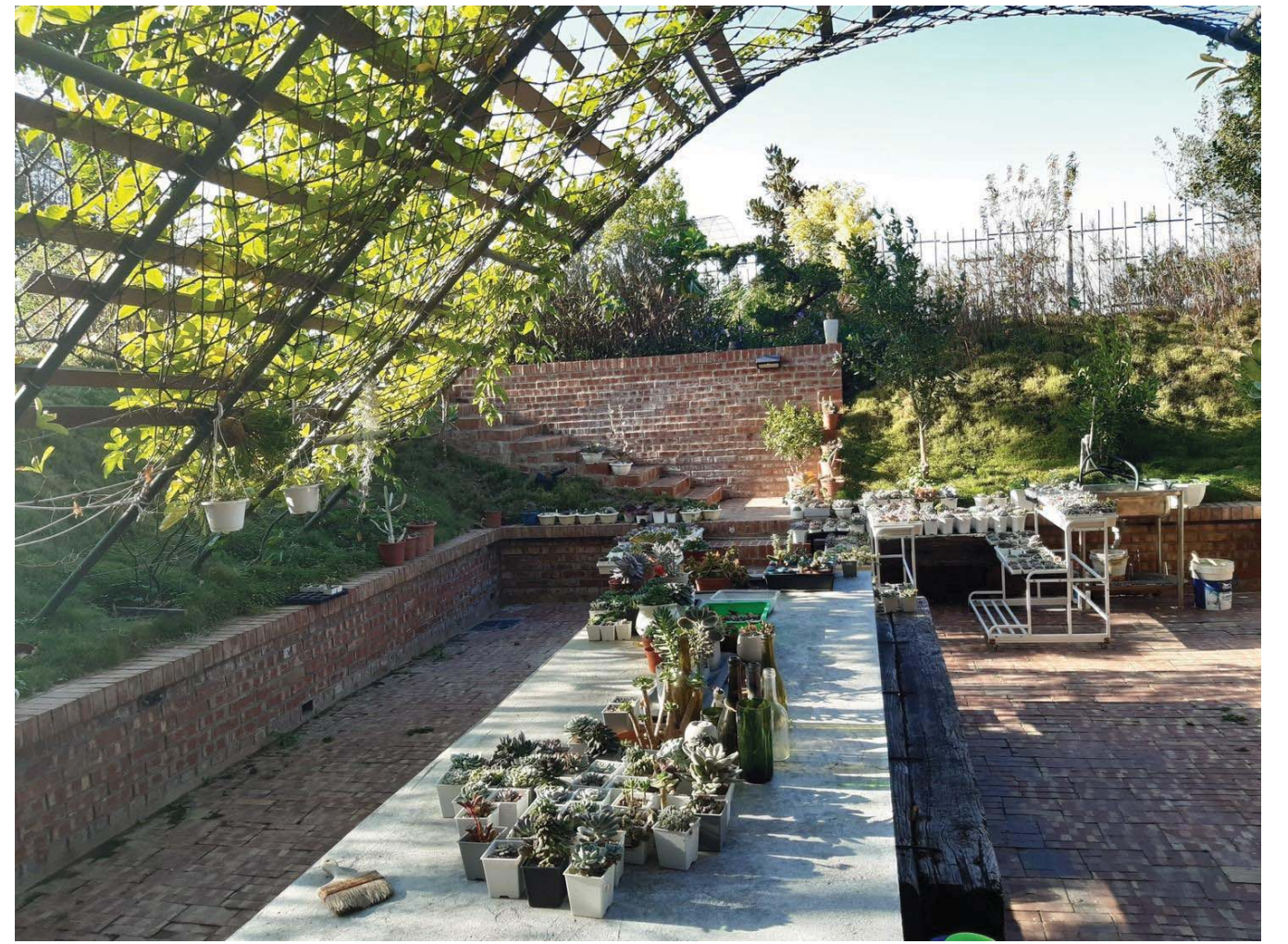
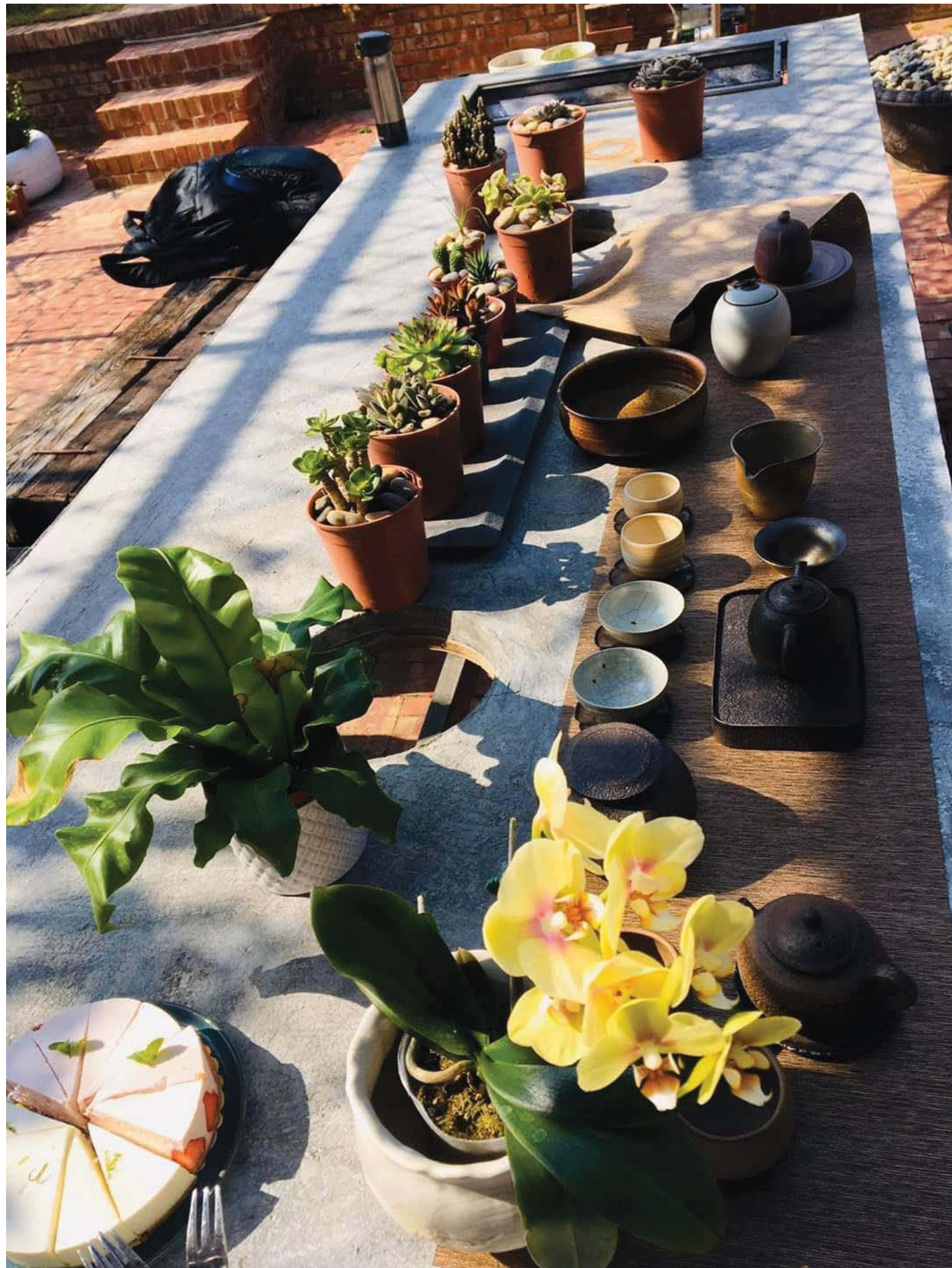








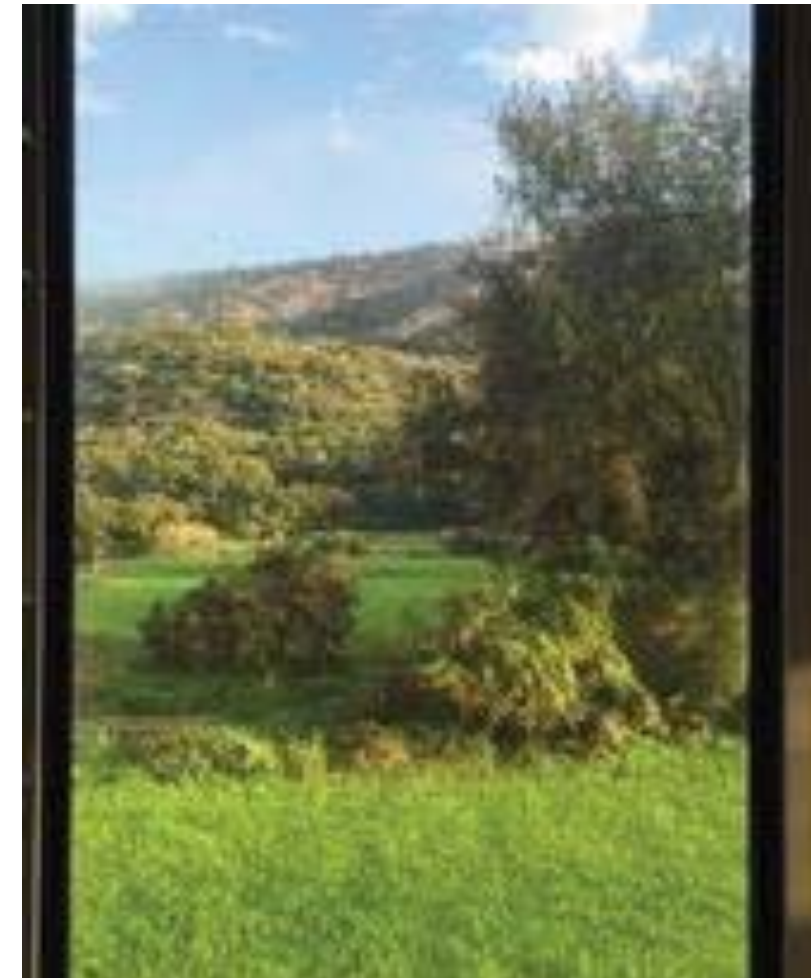
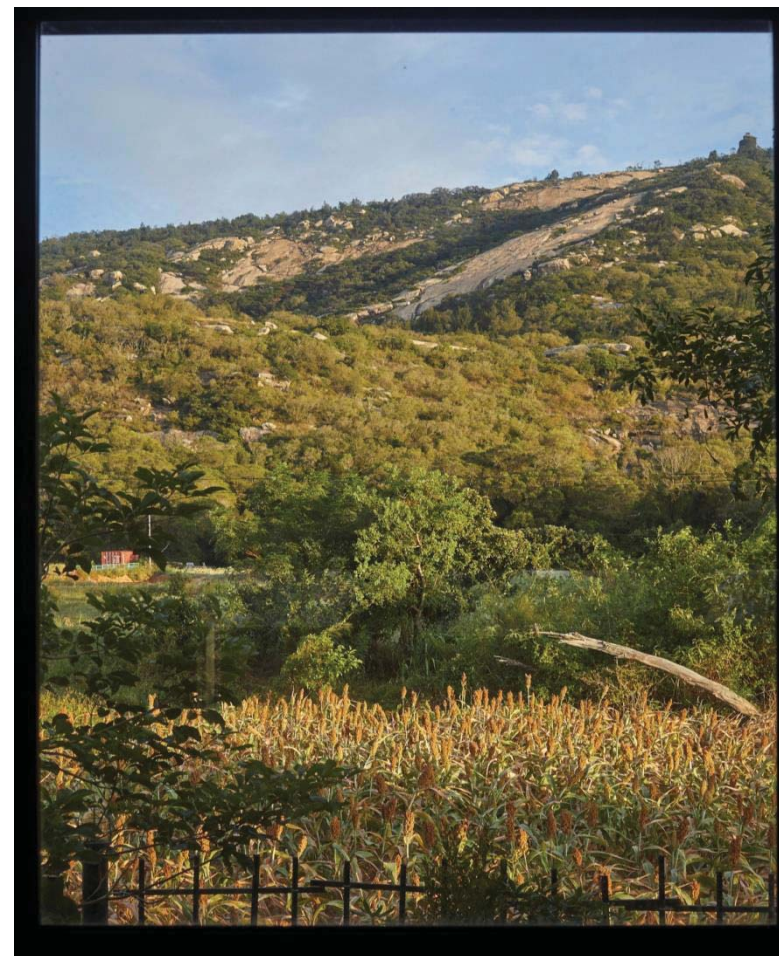








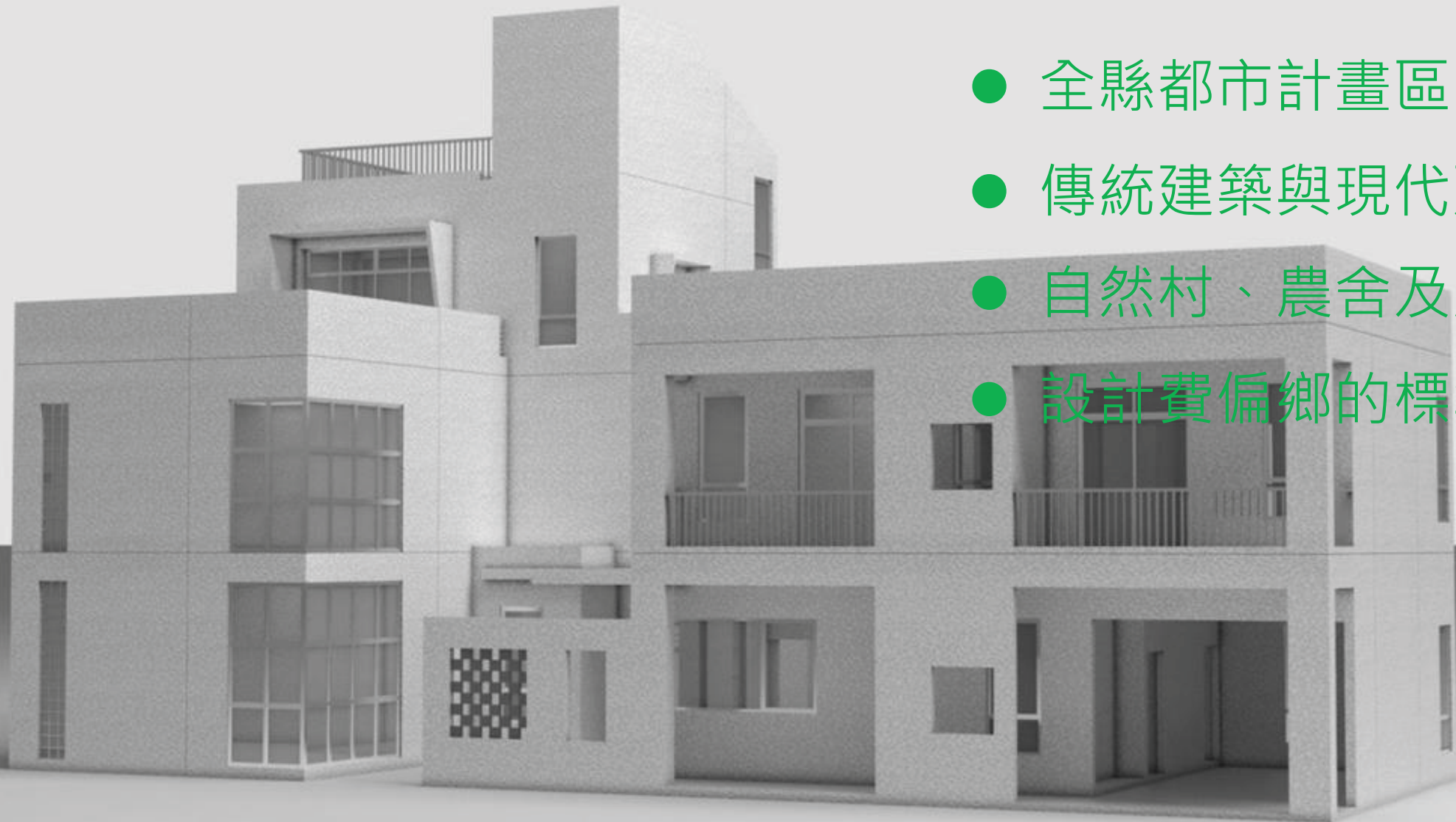
地景環境變化



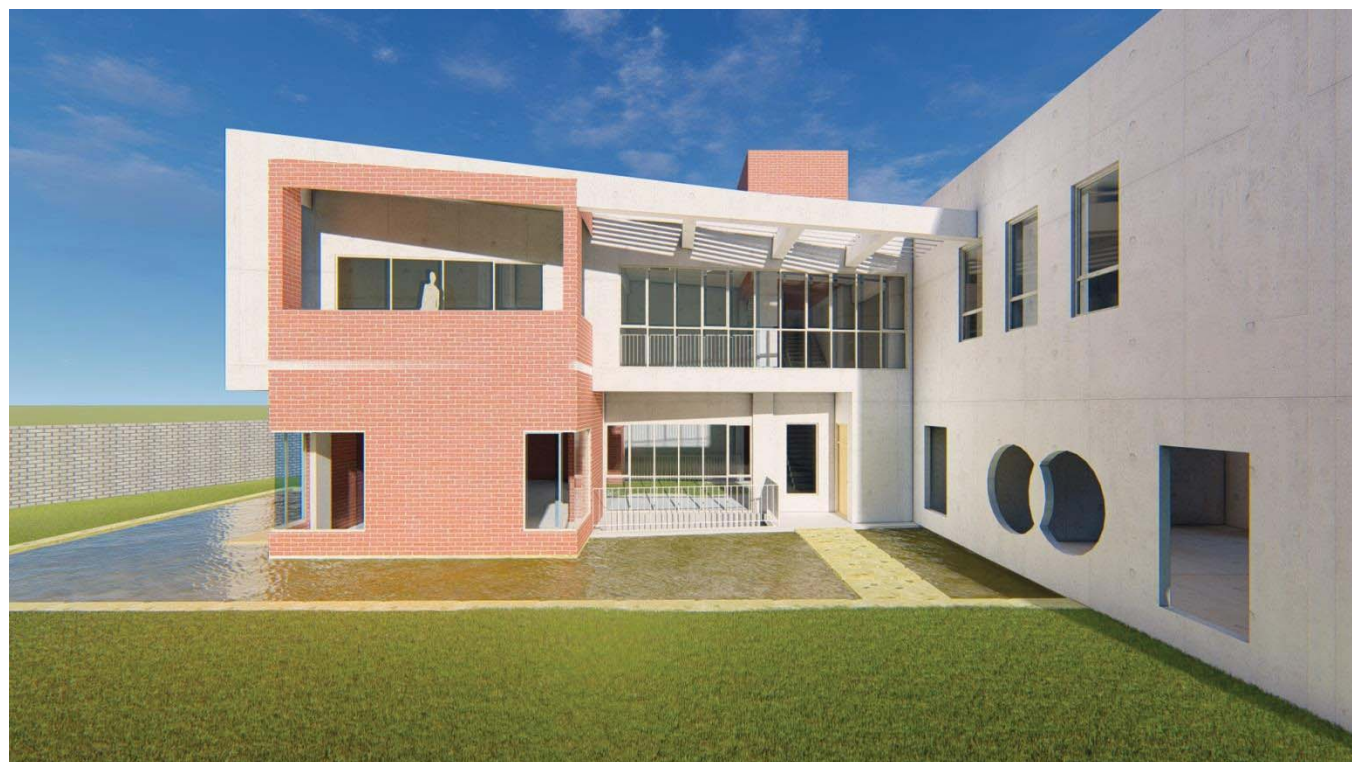


## ■ 私人建案

- 全縣都市計畫區
- 傳統建築與現代建案
- 自然村、農舍及細部計畫區
- 設計費偏鄉的標準



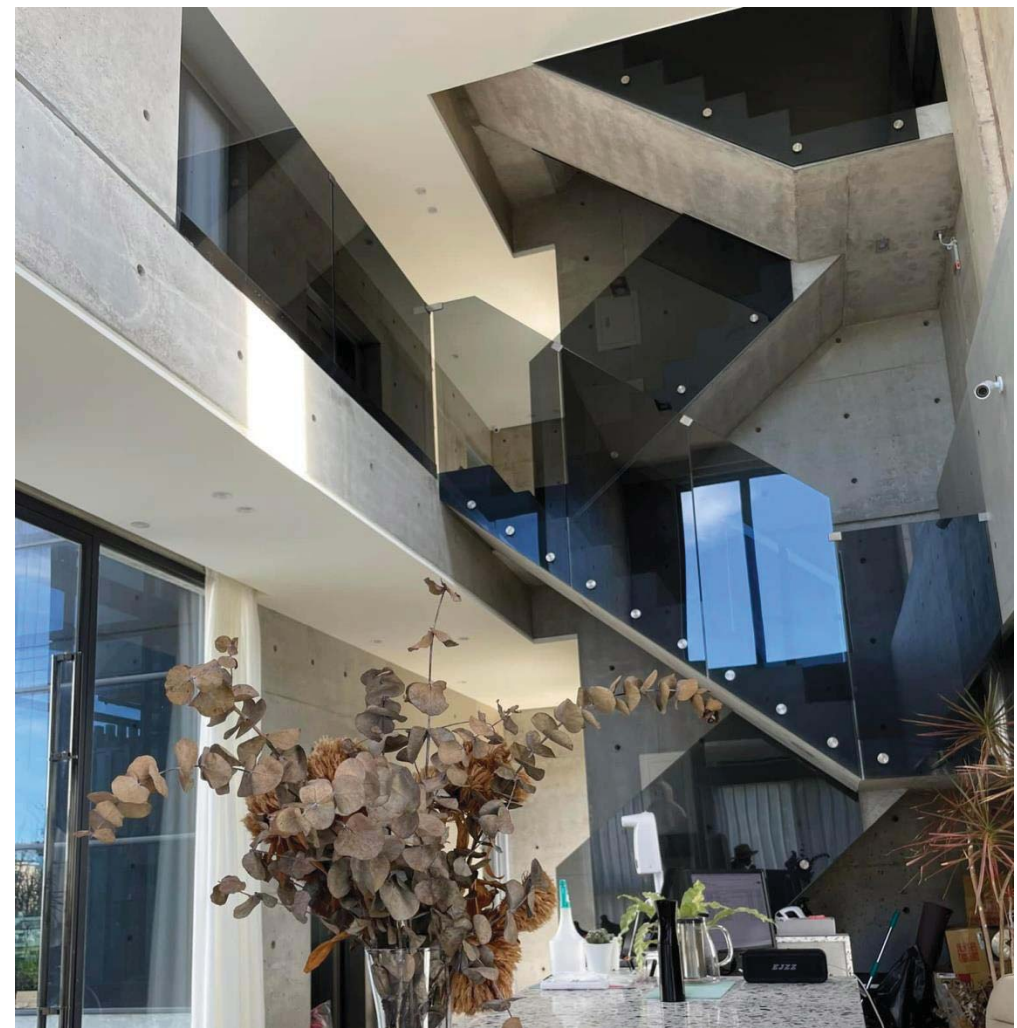
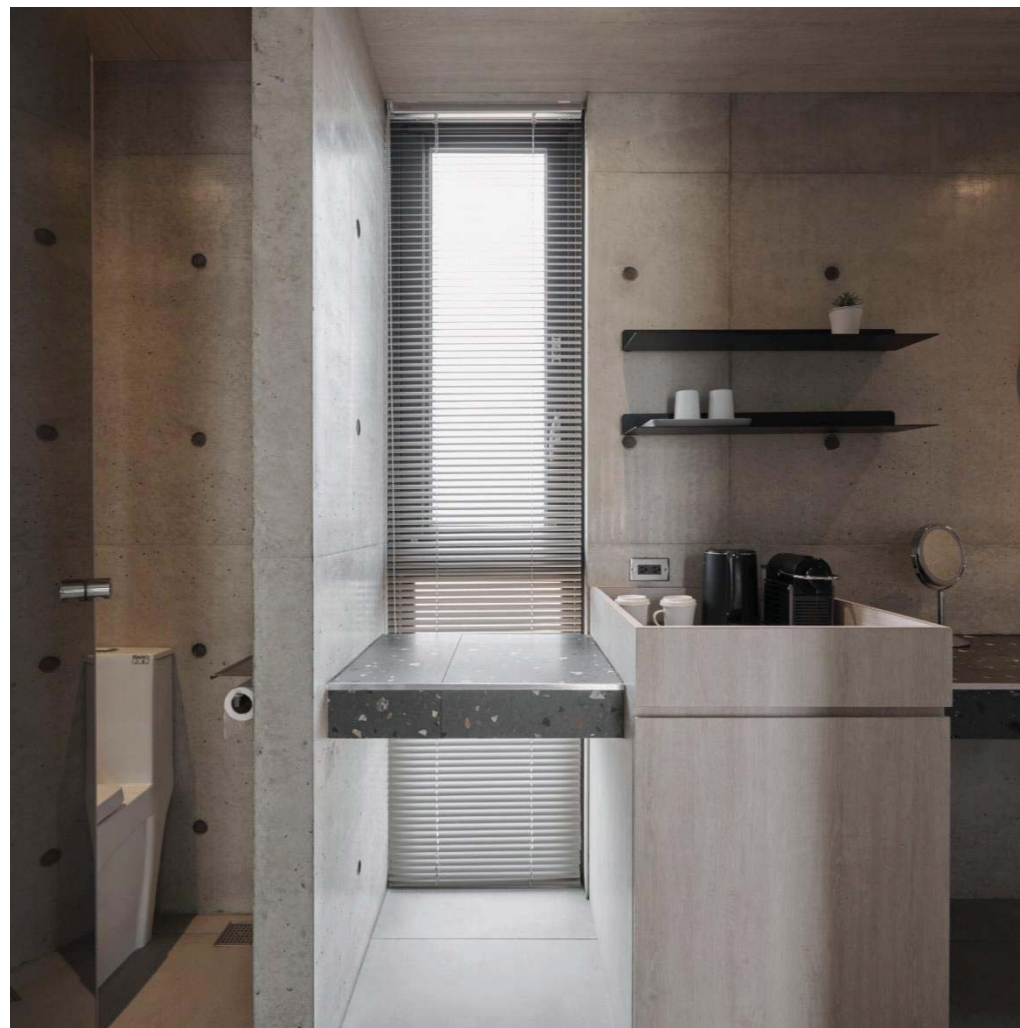
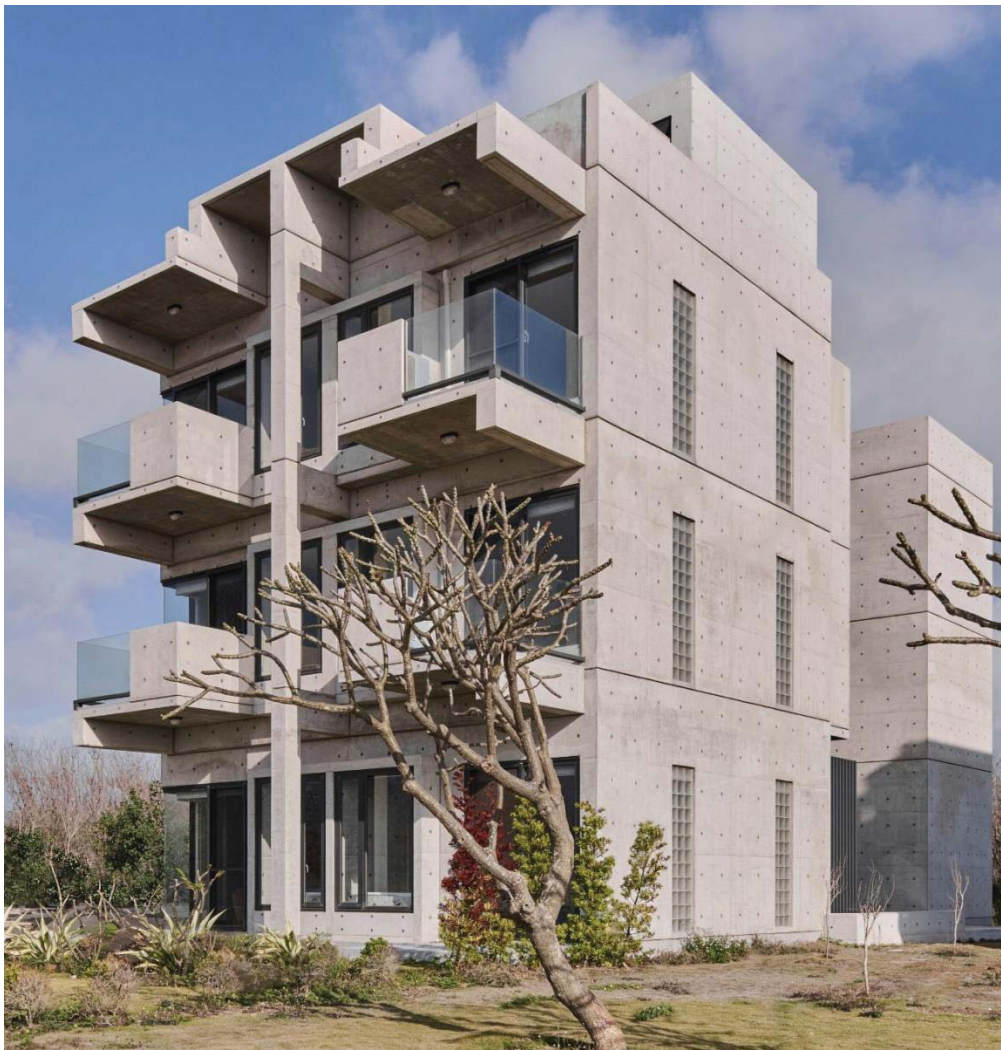
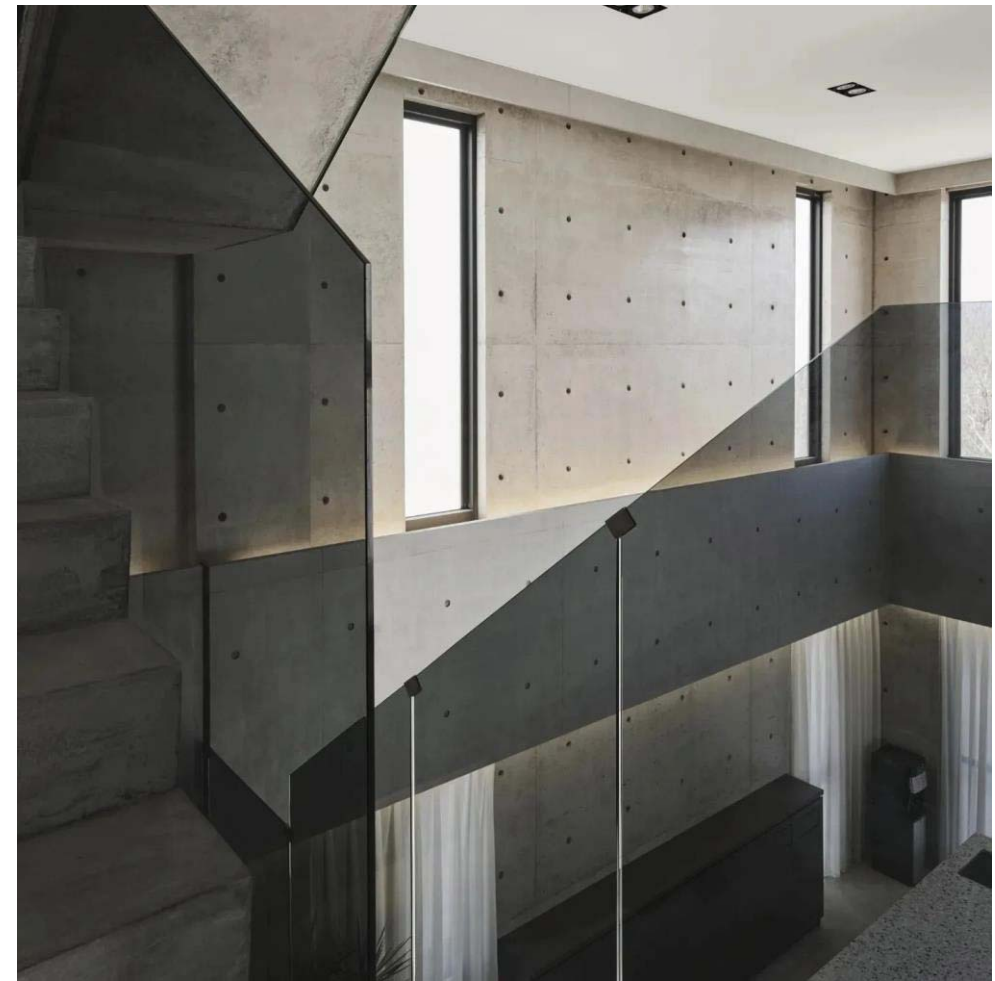
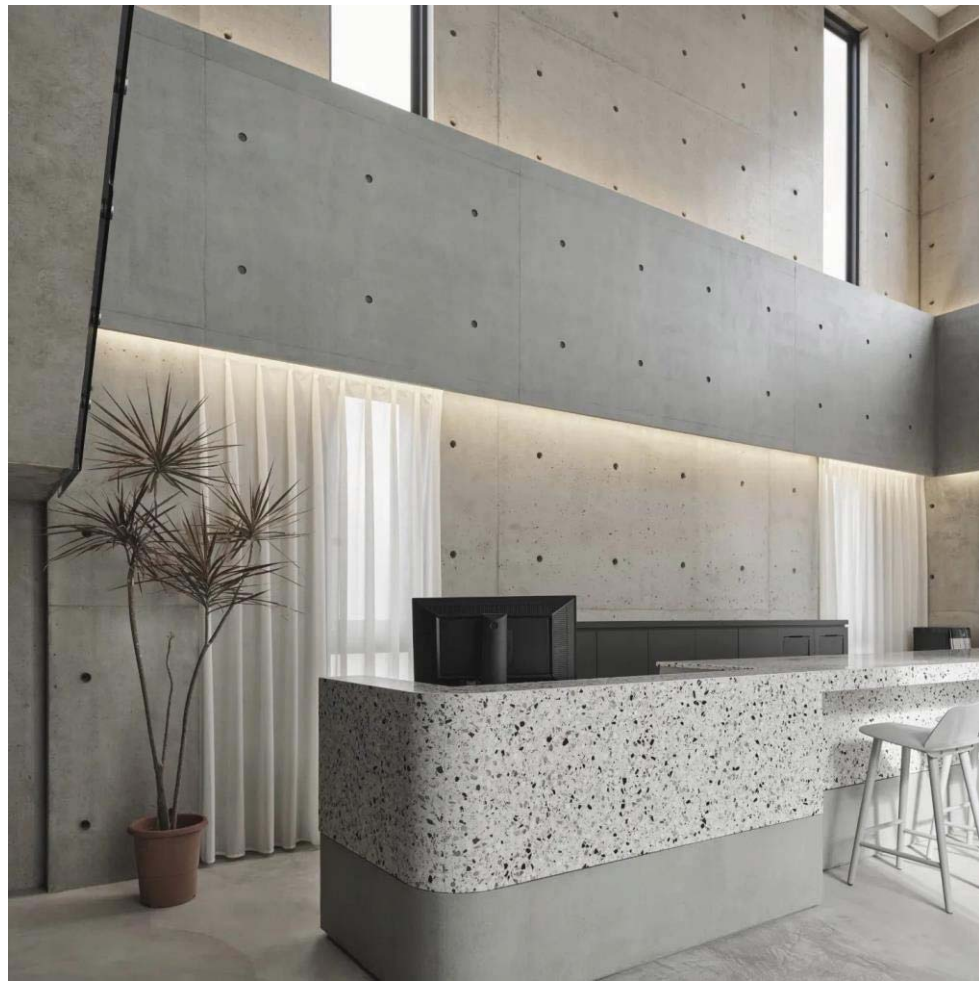
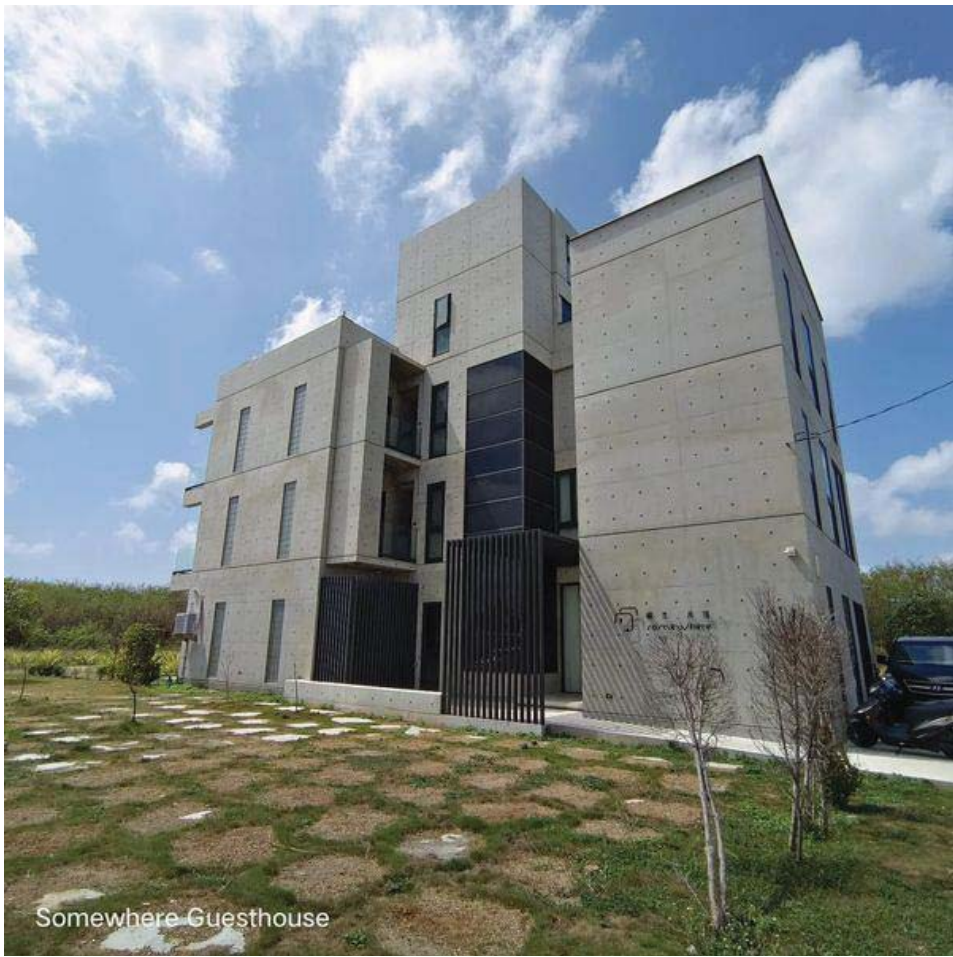












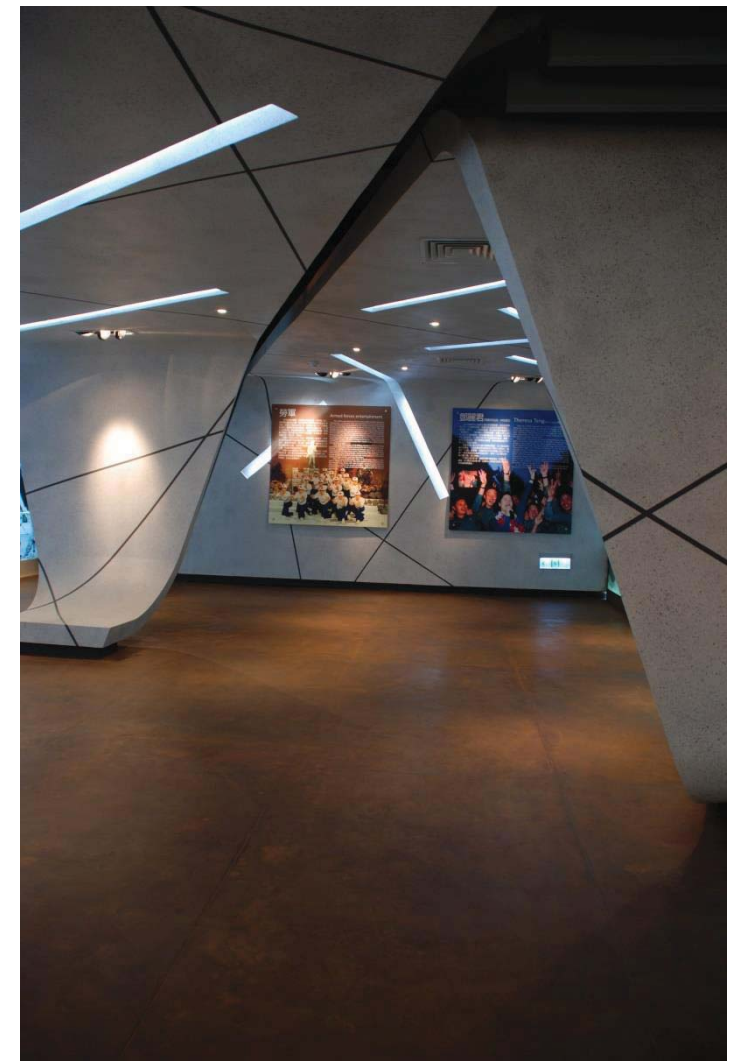


## ■ 公共工程

- 營造廠密度全台最高
- 人均工程建設預算全台最高
- 人力資源缺乏













國境之西 兩岸樞紐  
後疫情時代，都市生活是否還是唯一選項  
金門 歡迎您

